

# NORDSHIELD SA

Self Adhering SBS membranes

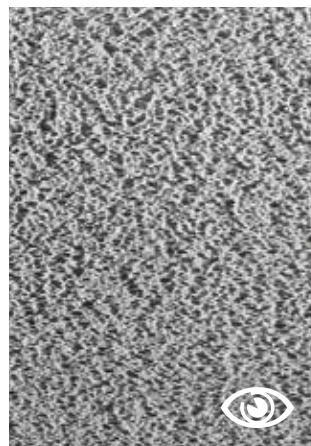
Florida Building  
Code Approvals FL 17007



Waterproofing. Right from the start.

The **Nordshield** family consists of four self-adhering waterproofing membranes. The bituminous compound is modified with elastomers, making the adhesive part of the membrane's formulation it's not a post-production application...which ensures an immediate bond and long-lasting adhesion to the substrate.

- **Nordshield SA Base** a base sheet that's compatible with self-adhered and torch-applied cap sheets.
- **Nordshield SA Base 3 mm Polyester** a self-adhering compound base sheet with release film on the top and bottom surfaces for two-ply SA systems.
- **Nordshield SA Mineral** self-adhering cap sheets that are available in today's popular shingle color blends.
- **Nordshield SMT** is a fiberglass-reinforced, self adhering membrane that is especially designed for use as a waterproofing underlayment in shingle, metal or tile roof systems. Nordshield SMT has an embossed upper surface that provides excellent skid resistance, and a formulation that performs in both high and low temperature environments.





Waterproofing. Right from the start.

## Nordshield System

## Installing

### Nordshield SA Base

A fiberglass-reinforced self-adhering membrane that serves as a base sheet in a two-ply self-adhered system. It can be applied directly to primed concrete and smooth/clean substrates such as wood, metal and polyiso by removing the polyethylene release film on the underside of the membrane. The top surface film is compatible with self-adhered and torch-applied cap sheets.

### Nordshield SA Base 3 mm (Polyester)

A 3 mm polyester-reinforced self-adhering membrane that serves as a base or ply sheet in a multi-layer self-adhered system. The top and bottom surfaces are covered with a split-release polyethylene film which is removed during installation to expose the adhesive compound. If the roof substrate is not suitable for direct adhesion, Nordshield Base can be fastened mechanically. Nordshield Base membrane is also available with a printed burn off polypropylene on the top surface for torch application of the cap sheet.



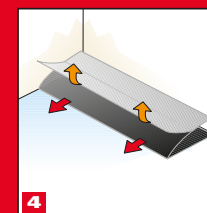
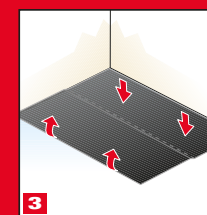
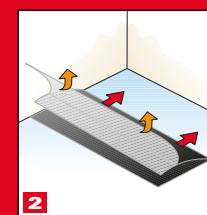
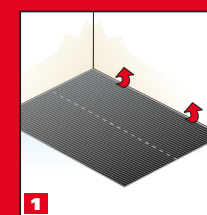
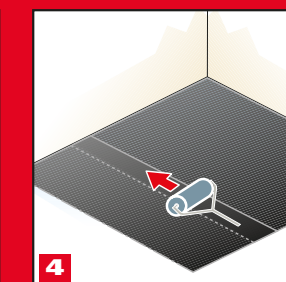
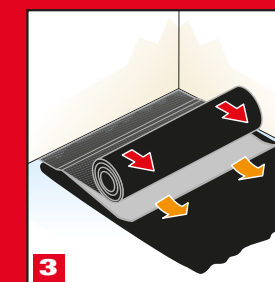
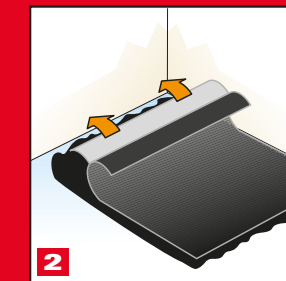
### Nordshield SA Mineral (Polyester)

A polyester-reinforced self-adhering membrane that serves as the cap sheet in the system. The top surface is covered with coloured mineral granules while the bottom surface has the easy-to-remove split-release film.



### Installing base sheets

- 1 The surface must be firm, smooth, dry and free of dust, debris. Concrete decks must be primed with ASTM D 41 asphalt primer.
- 2 Align the base sheet on the lower edge of the roof deck parallel to the slope. Remove the release film approximately 18" from the end of the membrane and press the membrane into place.
- 3 Roll the membrane back to the end section that is already adhered. Then, remove the release film as you unroll the membrane, taking care to keep it aligned.
- 4 Use a weighted roller over the entire surface of the membrane to insure total and even adhesion to the substrate. Roll the laps along the length of the membrane with a hand roller.
- 5 Install adjacent membranes using the same process, overlapping the side laps 3" and end laps 6", making sure that all laps face away from water flow.



### Installing cap sheets

- 1 The surface must be firm, smooth, dry and free of dust, debris, and any other loose materials. If the Nordshield SA Base has been exposed for any length of time, prime the surface with ASTM D 41 asphalt primer and wait until it dries completely.
- 2 Align the cap sheet (Nordshield SA Mineral) along the lower edge of the roof deck. If a base sheet has been installed, position the cap sheet parallel to the direction of the base sheet so its laps are staggered approximately 18" from the base sheet laps. Fold the membrane in half, lap edge to lap edge, and peel away half of the pre-cut release film.
- 3 Return the folded half to its original position and apply the exposed adhering bitumen securely to the substrate or base sheet.
- 4 Fold over the opposite half of the membrane, remove the other half of the release film and repeat step 3. Roll the side laps along the length of the membrane with a hand roller to ensure adequate adhesion.
- 5 Overlap end laps 6" and secure with trowel grade modified bitumen adhesive, or by "sinking" the granules of the under lap with a hot air heat-weld tool.
- 6 Roll a weighted roller over the entire surface of the membrane to ensure total and even adhesion to the substrate or base sheet.

## Nordshield System characteristics

### Nordshield membranes provide effective waterproofing solutions for

- ⊕ Wood decks.
- ⊕ Flame sensitive thermal insulation.
- ⊕ Roofs where torch or hot asphalt applications are not practical or desirable.

### The advantages of thermo-adhesive membranes are as follows:

- ☺ Safe and clean application... no asphalt odors and the risk of fire is completely eliminated;
- ☺ Strong adhesion on all compatible surfaces (primed concrete, metal, wood, thermal insulation);
- ☺ Time-saving installation... typical roofing skills and equipment are not necessary;
- ☺ Long-lasting waterproofing performance.

### Material handling and job preparation

- ⇒ Self adhering membranes cannot be installed in cold or wet weather, or when moisture is on the deck or substrate.
- ⇒ Ambient and material temperatures must be at least 50 degrees F (10 degrees C) before starting the installation.
- ⇒ All concrete, masonry, and metal surfaces must be primed, and all surfaces must be dry, clean and free of loose particles.
- ⇒ Rolls should be stored out of direct sunlight and kept in boxes until just before their application.
- ⇒ Unused rolls should not be left exposed overnight.
- ⇒ If the roof slope is over 2<sup>1/2</sup>:12 head laps must be back-nailed. Ring-shanked metal capped roofing nails are recommended, fastened 6" on center.
- ⇒ Self adhering membranes cannot be applied directly to shingles or similar roof surfaces.
- ⇒ It is important to have a weighted roller on hand as well as hand rollers to ensure satisfactory adhesion.
- ⇒ A hot air heat-weld gun is useful for sealing end laps and membrane joints.

### Characteristics

	SMT	Base 1.5 mm	Base 3 mm	Mineral cap
Roll size	65' 7" x 39 <sup>3/8</sup>	65' 7" x 39 <sup>3/8</sup>	32'10" x 39 <sup>3/8</sup>	32'10" x 39 <sup>3/8</sup>
Top Surface	Skid resistant PP film	PP film	PE film	granules
Bottom surface	Release film	Release film	Release film	Release film
Nominal thickness	1.6	1.5	3.0	3.8
Reinforcement	fiberglass	fiberglass	Reinf. polyester	Reinf. polyester
Softening Point	250°F (120°C)	250°F (120°C)	250°F (120°C)	250°F (120°C)
Cold Flexibility	-13°F (-25°C)	-13°F (-25°C)	-13°F (-25°C)	-13°F (-25°C)



All data furnished refers to standard production and is given in good faith within the applicable manufacturing and testing tolerances. Nord Bitumi reserves the right to improve and change its products at any time without prior notice. Nord Bitumi cannot be held responsible for the use of its products under conditions beyond its own control. Under no circumstances will Nord Bitumi be held liable for any damage, whether personal injury or property damage, which occur during or after the application of the membrane. The material is made in Sona, VR - Italy.

For further information, comments or suggestions, please contact: [info@nordtec.us](mailto:info@nordtec.us)

ARC / 1 / 07-2016 / 1000